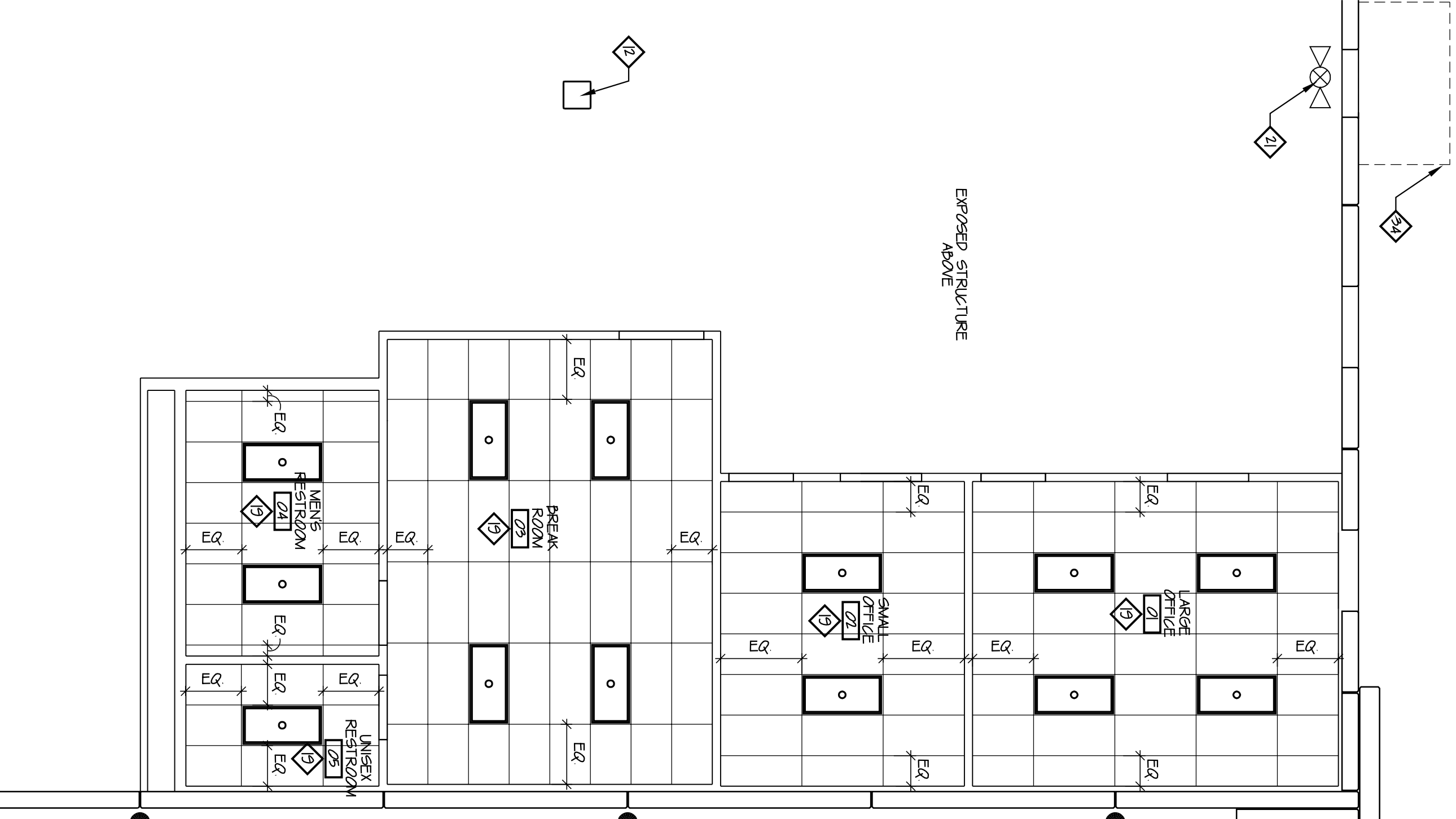


**GENERAL NOTES**

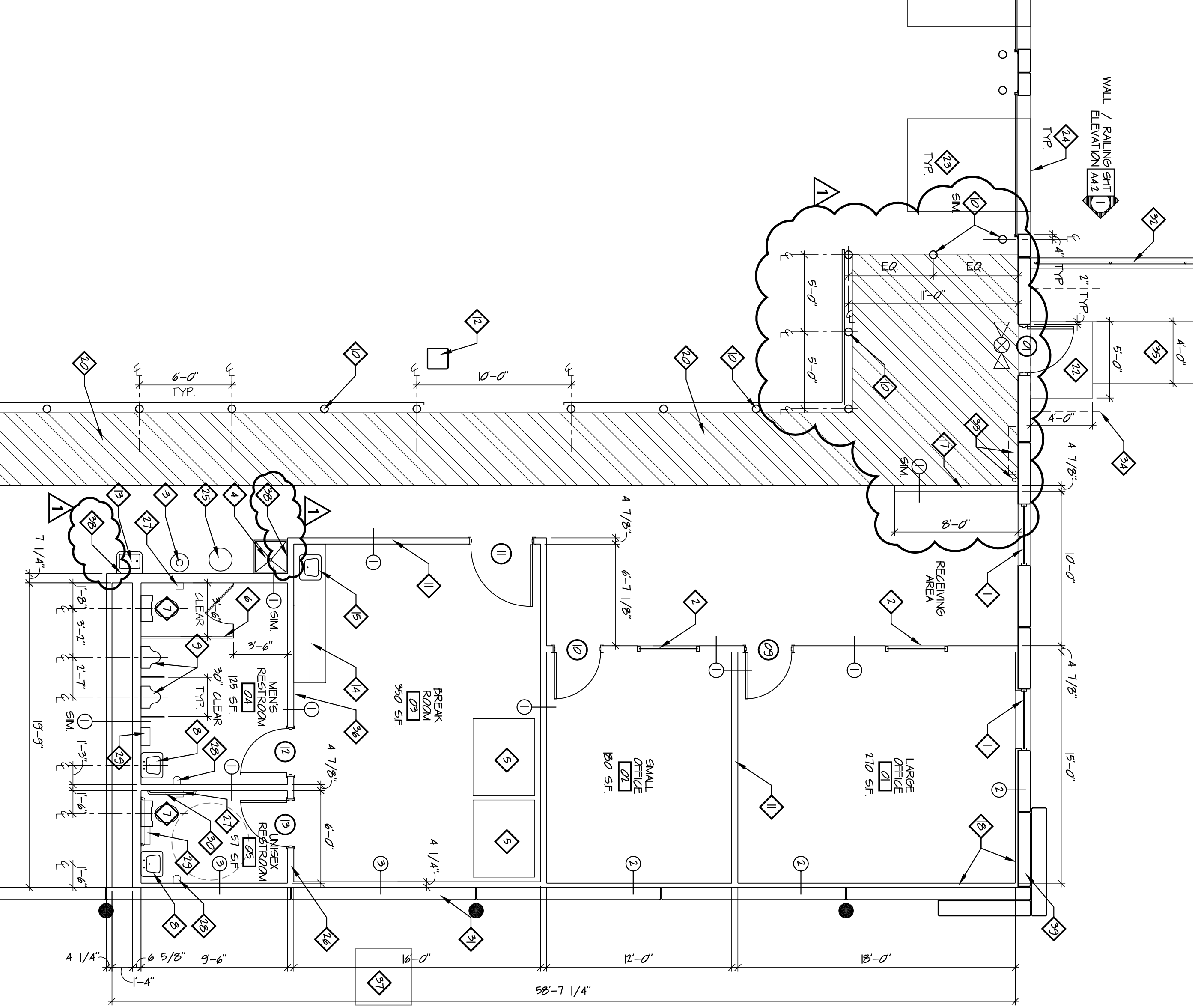
1. SEE ROOM FINISH SCHEDULE FOR ALL INTERIOR FINISH INFORMATION.
2. SEE SHEET A11 FOR RESTROOM FINISHES & ACCESSORY MOUNTING INFORMATION.
3. GYPSUM BOARD IN RESTROOMS 04 AND 05 TO BE TYPE "X" MOISTURE RESISTANT.

**DRAWING NOTES**

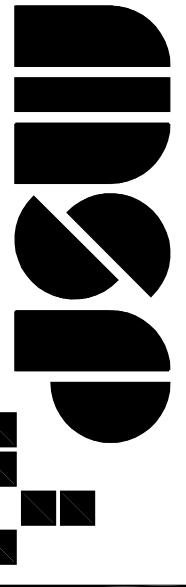
1. 4'-0" x 4'-0" ALUMINUM FRAMED WINDOW - SEE WINDOW SCHEDULE
2. 4'-0" x 4'-0" HOLLOW METAL FRAMED WINDOW - SEE WINDOW SCHEDULE
3. ELEVATOR STATION - SEE PLUMBING DRAWINGS
4. OWNER PROVIDED VENDING MACHINES - SEE ELECTRICAL DRAWINGS FOR POWER REQUIREMENTS
5. FLOOR MOUNTED METAL TOILET PARTITION - SEE SPECIFICATIONS
6. FLOOR MOUNTED TOILET FIXTURES - SEE PLUMBING DRAWINGS
7. WALL MOUNTED SINK - SEE PLUMBING DRAWINGS
8. WALL MOUNTED URINAL - SEE PLUMBING DRAWINGS
9. CONCRETE FLEED METAL BOLDED WITH GABRIEL - SEE DETAIL P ON SHEET A11
10. WALL TO BE 3-5/8" 12 GA METAL STUDS @ 16" OC WITH 5/8" TYPE "X" GYPSUM BOARD (BOTH SIDES) - SEE WALL TYPES
11. STRUCTURAL STEEL COLUMN BY PRE-ENGINEERED BUILDING MANUFACTURER
12. ACCESSIBLE DRINKING FOUNTAIN - SEE PLUMBING DRAWINGS
13. PLASTIC LAMINATE COUNTERTOP WITH PLASTIC LAMINATE BASE AND WALL CABINETS - SEE SHEET A41 FOR ELEVATION - LAMINATE FINISH AS SELECTED BY OWNER
14. LAY-IN SINK - SEE PLUMBING DRAWINGS
15. OWNER PROVIDED MICROWAVE - SEE ELECTRICAL DRAWINGS FOR POWER REQ
16. WALLS TO BE 3-5/8" 12 GA METAL STUDS @ 16" OC WITH 5/8" TYPE "X" MOISTURE RESISTANT GYPSUM BOARD (BOTH SIDES) - NO SOUND INSULATION IN WALL - TOP OF WALL TO BE 48" AFF - SEE WALL TYPES
17. 5/8" TYPE "X" GYP BO ON METAL FRAMING OVER PRECAST WALL - SEE WALL TYPES
18. SEE ROOM FINISH SCHEDULE FOR LAY-IN CEILING HEIGHT AND TYPE
19. PROVIDE STRIPING ON FLOOR - 6" WIDE 2'-0" OC TYP - COLOR TO BE "SAFETY YELLOW"
20. EMERGENCY EXIT LIGHT OVER DOOR - SEE ELECTRICAL DRAWINGS
21. 4" THICK CONCRETE SLAB-ON-GRADE WITH 6" x 6" - 12/12 WIRE MESH OVER 4" COMPACTED GRANULAR FILL OVER COMPACTED EARTH - SLOPE 1/4" / FT AWAY FROM DOOR - PROVIDE 1/2" EXPANSION JOINT MATERIAL BETWEEN PAV EDGE AND BUILDING FACE
22. DOOR LEVELEER - 4 TOTAL DOOR LEVELEERS TO BE INSTALLED AT NEW DOOR AREA - REMOVE (A) FOR EXISTING LEVELEERS FROM EXISTING BUILDING AND PROVIDE (2) TWO NEW DOOR LEVELEERS TO MATCH EXISTING AND PROVIDE NEW LEVELEERS TO MATCH EXISTING SIZE - SEE STRUCT DWGS
23. NEW SECTIONAL OVERHEAD DOOR - SEE SPECIFICATIONS - SOLID OPENING IN PANEL TO BE 5'-0" WIDE BY 10'-0" HIGH - INSTALL PER MANF REZ.
24. FLOOR MOUNTED WATER HEATER - SEE PLUMBING DRAWINGS
25. 6" 12 GA METAL STUDS @ 16" OC WITH 5/8" TYPE "X" GYP BO - SEE WALL TYPES
26. WALL MOUNTED TOILET PAPER DISPENSER - PROVIDE BLOCKING AS REQ
27. WALL MOUNTED SOAP DISPENSER - PROVIDE BLOCKING AS REQ
28. WALL MOUNTED PAPER TOWEL DISPENSER - PROVIDE BLOCKING AS REQ
29. WALL MOUNTED ADA GRAB BAR - PROVIDE BLOCKING AS REQ
30. PRECAST CONCRETE PANEL
31. H-1/2" DIA. PAINTED METAL RAILING SYSTEM ON TOP OF CAST-IN PLACE CONCRETE WALL - RAILING TO EXTEND FULL LENGTH OF WALL - CORN. BRLL. AND GROUT POSTS MIN. 4' EMBED IN WALL - POSTS AT 5'-0" OC MAX. TOP OF RAILING TO BE 48" ABOVE TOP OF CAST-IN PLACE CONCRETE WALL
32. APPROXIMATE LOCATION OF DRAINAGE WATER LINE AND GAS LINE ENTERING BUILDING AND BACK-FLOW PREVENTER - HOLD LINES TIGHT TO INSIDE FACE OF EXTERIOR WALL - INSTALL BACKFLOW PREVENTER LIGHT TO EXTERIOR WALL AND PROVIDE TIGHT GYPSUM WALL - SEE MECHANICAL AND CIVIL DRAWINGS
33. LINE OF CANOPY ROOF ABOVE - SEE ROOF PLAN AND SHEET A15
34. SEE CIVIL DRAWINGS FOR CONTINUATION OF 4" THICK REINFORCED CONCRETE SEWERWALK
35. PROVIDE BRACKET MOUNTED FIRE EXTINGUISHER ON WALL ADJACENT TO CASEWORK IN BREAK ROOM - SEE SPECIFICATIONS - SEE SHEET A01 FOR LOCATION OF ADDITIONAL FIRE EXTINGUISHERS
36. CONCRETER PIP - SEE MECHANICAL DRAWINGS
37. PROVIDE FRP PANELS ON WALL AS INDICATED TO 4'-0" AFF - GYPSUM BOARD TO BE TYPE "X" MOISTURE RESISTANT AT THIS LOCATION



**ENLARGED PLAN**  
SCALE: 3/16" = 1'-0"  
A12



**ENLARGED PLAN**  
SCALE: 3/16" = 1'-0"  
A12



**McCall Smith Punshon, Inc.**  
3700 Park 42 Drive Suite 1908  
Cincinnati, Ohio 45241-2097  
Tel: 513-759-0004 • Fax: 513-563-7099  
Engineers • Architects • Surveyors  
Planners • Landscape Architects

Drawn by: DCC Project Wbr: RCM  
CAD File: 9733321-A12  
X-Ref File: 9733321-410

Issue/Revision	Number	Revision Date
FOR PERMIT	1	07/18/12
FOR CONSTRUCTION	1	08/22/12

© COPYRIGHT 2010, MCCALL SMITH PUNSHON, INC.

**NEW WAREHOUSE EXPANSION**  
FOR  
**Republic Wire**  
UNION CENTRE DRIVE  
WEST CHESTER, OHIO 45069

Sheet Title  
**ENLARGED FLOOR PLANS**

Project No. 97333322  
Scale AS NOTED  
Sheet No. **A14**  
File No. 97333 32