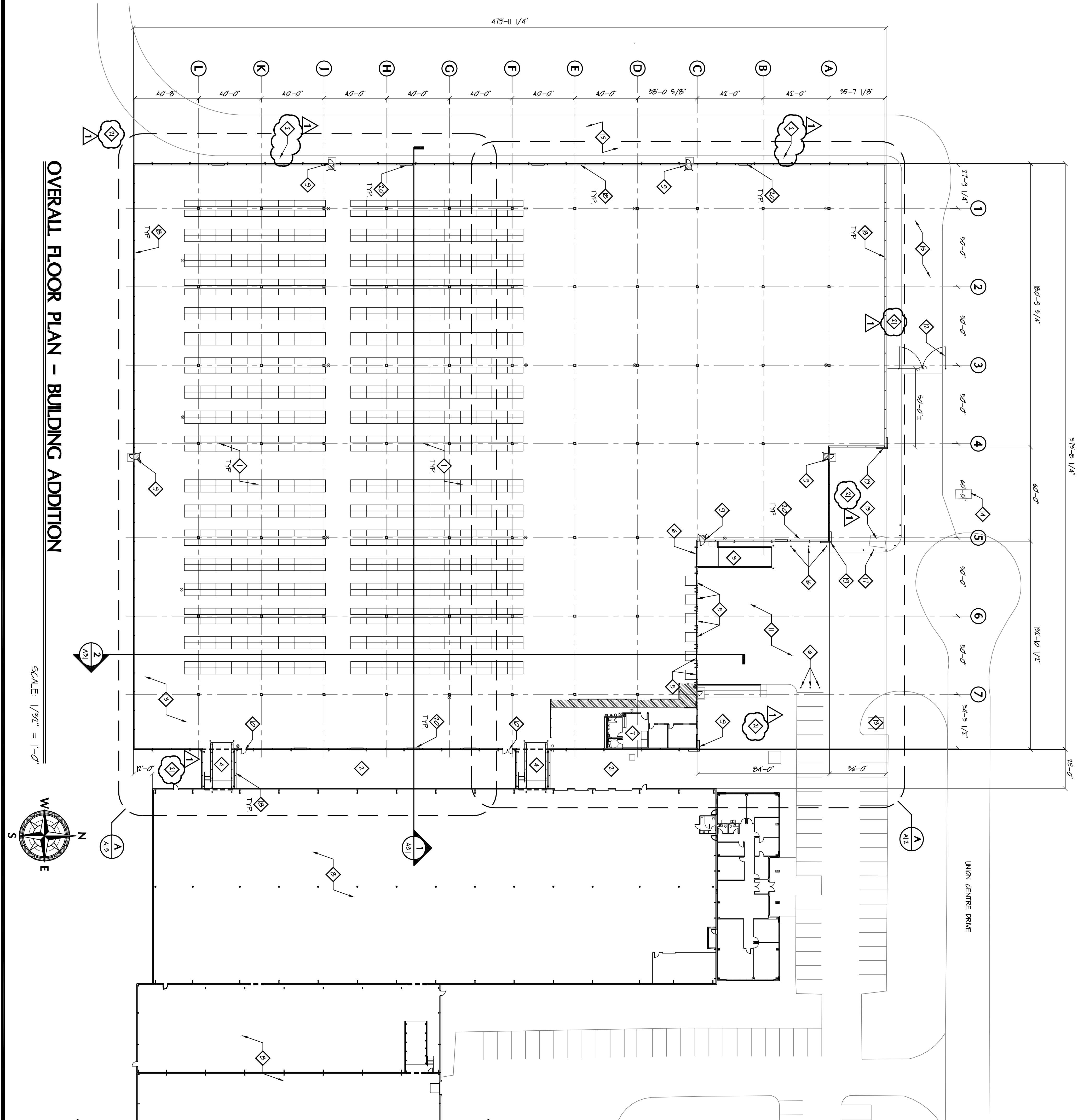


GENERAL NOTES

1. SEE RENOVATION DRAWINGS FOR ALL RELATED RENOVATION WORK.
2. SEE CIVIL DRAWINGS FOR ALL RELATED SITE WORK.
3. SEE SHEET A01 FOR INFORMATION RELATED TO EGRESS AND LIFE SAFETY.
4. SEE MEP DRAWINGS FOR ALL RELATED WORK.
5. SEE PLUMBING DRAWINGS FOR SPRINKLER SYSTEM DIAGNOSTIC DRAWINGS.
6. SEE STRUCTURAL DRAWINGS FOR STRUCTURAL SLAB WALL AND DETAIL INFORMATION.
7. REFER TO WALL SECTIONS FOR CONSTRUCTION OF EXTERIOR WALLS.
8. STEEL COLUMN AND GYPER-STRUCTURE DESIGN BY PRE-ENGINEERED METAL BUILDING MANUFACTURER.
9. ALL DIMENSIONS SHALL HAVE PREFERENCE OVER SCALE DO NOT SCALE DRAWINGS.
10. THE CONTRACTOR MUST VERIFY ALL CONDITIONS PRIOR TO STARTING CONSTRUCTION. THE CONTRACTOR SHOULD BE ADVISED IMMEDIATELY AND THE PARTIAL WORK SHOULD BE DISCONTINUED UNTIL NECESSARY REVISIONS CAN BE DECIDED UPON.
11. THE DRAWINGS INDICATE THE GENERAL SCOPE OF THE PROJECT IN TERMS OF ARCHITECTURAL AND THE TYPE OF STRUCTURAL SYSTEM AS SHOWN ON THE DRAWINGS. THE DRAWINGS DO NOT NECESSARILY INDICATE OR PRESUME ALL WORK REQUIRED FOR FULL PERFORMANCE AND COMPLETION OF THE REQUIREMENTS OF THE CONSTRUCTION DOCUMENTS. ON THE BASIS OF THE GENERAL SCOPE INDICATED OR DESCRIBED, THE CONTRACTORS SHALL FURNISH ALL ITEMS REQUIRED FOR THE PROPER EXECUTION AND COMPLETION OF THE WORK.
12. THE CONTRACTOR IS RESPONSIBLE FOR OBTAINING ALL NECESSARY PERMITS AND INSPECTORS FOR FINISHES AND INSPECTIONS. NOTIFY THE ARCHITECT IMMEDIATELY OF ANY NON-CONFORMING DESIGN ISSUES.
13. ALL FINISHES, EQUIPMENT AND MATERIALS SHALL BE INSTALLED PER THE MANUFACTURERS SPECIFICATIONS, RECOMMENDATIONS AND INSTRUCTIONS.
14. SHOP DRAWINGS, PRODUCT DATA AND SAMPLES SHALL BE PROVIDED AS REQUIRED TO ENABLE THE ARCHITECT TO REVIEW AND APPROVE. THE CONTRACTOR SHALL BE RESPONSIBLE FOR THE DESIGN MANAGER AND SHALL BE STAFFED WITH THE GENERAL CONTRACTORS CONSTRUCTION MANAGERS REVIEW STAMP WITH THE APPROPRIATE ACTION NOTED PRIOR TO SUBMITTAL TO THE ARCHITECT FOR WHICH SHOP DRAWINGS, PRODUCT DATA AND SAMPLES ARE REQUIRED TO BE FURNISHED. SHOP DRAWINGS SHALL NOT BE CONSIDERED PRIOR TO COMPLETE PROCESSING OF THE APPROVED SUBMITTAL.
15. ALL WORK SHALL BE IN ACCORDANCE WITH THE QUALITY STANDARDS OF THE TRADE AND SHALL BE INSTALLED IN ACCORDANCE WITH ALL APPLICABLE LOCAL, STATE AND FEDERAL CODES AND MANUFACTURERS RECOMMENDATIONS.
16. TRANSPORT ALL TRASH, RUBBISH, AND REMAINS FROM SITE AND LEGALLY DISPOSE OF SAME. THE MANNER OF REMOVAL MUST BE CONFIRMED WITH THE OWNER AND AS ALLOWED BY ALL CITY AND STATE REGULATIONS.
17. SEAL PERIMETER OF FRAMES OF ALL EXTERIOR OPENINGS TO ADJACENT WALL CONSTRUCTION BETWEEN PENETRATION ITEM AND EXTERIOR WALL CONSTRUCTION.
18. CORROSION RESISTANT DOCK EQUIPMENT, INCLUDING DAMPERS, SEALS AND NEW & EXISTING LENGERS WITH SPECIFIC SITE CONDITIONS. ADVISE ARCHITECT OF ANY REQUIRED PLAN MODIFICATIONS TO ACCOMMODATE DOCK EQUIPMENT, INCLUDING FOUNDATION EXTENSIONS PRIOR TO THE START OF CONSTRUCTION.
19. THE DESIGN OF ALL STEEL, STRUCTURAL MEMBERS, ALL EXTERIOR PANEL MEMBERS AND ANY COMPONENTS AS SUPPLIED BY THE PRE-ENGINEERED METAL BUILDING MANUFACTURER FOR THEIR ERECTION REQUIREMENTS, STABILITY AND CONNECTIONS ARE THE SOLE RESPONSIBILITY OF THE SUPPLIER.
20. ALL STEEL, STRUCTURAL MEMBERS ABOVE FLOOR LINE AND ADDITIONAL METAL PRODUCTS NEEDED TO FINISH OR "CLOSE-UP" THE BUILDING TO BE BY METAL BUILDING MANUFACTURER UNLESS NOTED OTHERWISE.

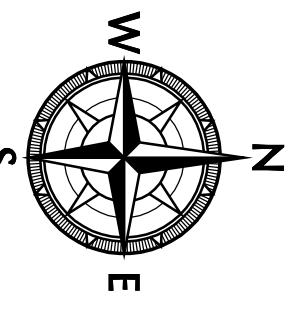
DRAWING NOTES

1. APPROXIMATE 1/4" X 4" STACKED STORAGE RACK BY OWNER.
2. OPEN AIR OUTDOOR SPACE PROVIDE 1" TO 3" WASHED GRAVEL, 6" TO 8" INCHES DEEP WITH 1" TO 3" WASHED SAND ON GRAVEL.
3. NEW CONCRETE SLAB-ON-GRADE DRIVE-UP RAMP - SEE ENLARGED PLANS.
4. NEW CONCRETE RAMP AND CONCRETE STAR CONNECTOR BETWEEN EXISTING WAREHOUSE AND NEW WAREHOUSE - SEE ENLARGED PLANS.
5. NEW SECTIONAL OVERHEAD DOOR WITH DOCK LEVELER - SEE ENLARGED PLANS.
6. NEW SECTIONAL OVERHEAD DOOR - SEE ENLARGED PLANS.
7. WAREHOUSE RECEIVING & BREAKROOM AREA - SEE ENLARGED PLANS.
8. EXISTING WAREHOUSE TO REMAIN - SEE SHEET A01 FOR CONTINUATION OF EXISTING WAREHOUSE.
9. NEW MAN-DOOR FOR EGRESS - SEE SHEET A01 AND ENLARGED PLANS - PROVIDE 5'-0" WIDE X 4'-0" DEEP CONCRETE PAD AT EXTERIOR OF DOOR UNDO - PROVIDE 4" THICK CONCRETE SLAB-ON-GRADE WITH 6" X 6" - 10/10 WIRE MESH OVER 4" COMPACTED GRANULAR FILL OVER COMPACTED EARTH - 4.0% 1/4" / FT AWAY FROM DOOR - PROVIDE 1/2" EXPANSION JOINT MATERIAL BETWEEN PAD EDGE AND BUILDING FACE - PROVIDE FLOOR STRIPING AND BOLLARDS AT EGRESS DOOR - SEE DETAILS.
10. NEW MAN-DOOR TO BE MARKED "NOT AN EXIT".
11. NEW CONCRETE PAVING - SEE CIVIL DRAWINGS FOR ADDITIONAL INFORMATION IN THIS AREA.
12. 4'-0" HIGH X 3/4'-0" WIDE GALVANIZED DOUBLE TUBULAR HARBOR GATE - SEE SHEET A12 FOR GATE ELEVATION - PROVIDE 6" DIAMETER, T-27 LONG GALVANIZED GATE 12515 - 12515 COMMERCIAL GRADE PROOF ROD - LOCK PROVIDED BY OWNER - SEE CIVIL DRAWINGS FOR ADDITIONAL GATE LOCATION AT ACCESS ROAD TO MERIDIAN WAY.
13. EXISTING WATER METER PIT - SEE CIVIL DRAWINGS.
14. EXISTING ELECTRICAL SERVICE - SEE CIVIL DRAWINGS.
15. HEAVY DUTY ASPHALT PAVING - SEE CIVIL DRAWINGS.
16. NEW CONCRETE FILLED METAL BOLLARD - SEE SECTION 3 ON SHEET A12 - PROVIDE THREE (3) BOLLARDS EQUALLY SPACED.
17. NEW CONCRETE FILLED METAL BOLLARD - SEE SECTION 3 ON SHEET A12 - PROVIDE SIX (6) BOLLARDS EQUALLY SPACED ALONG EDGE OF PAVEMENT - CORROSION FINAL LOCATION OF BOLLARD IN FIELD WITH OWNERS & ARCHITECT PRIOR TO INSTALLATION.
18. 3'-3/4" INSULATED PRECAST WALL PANEL - SEE SHEETS A11 AND A12 FOR ADDITIONAL INFORMATION.
19. 11'-3/4" PRECAST WALL PANEL AT CORNER ONLY - SEE SHEET A11 AND ENLARGED PLAN ON SHEET A21 FOR ADDITIONAL INFORMATION.
20. MECHANICAL LOWER CENTER ON PRECAST PANEL - SEE BUILDING ELEVATIONS AND MECHANICAL DRAWINGS.
21. ALL DISTURBED AREAS TO RECEIVE NEW GRASS SEEDING UNLESS NOTED OTHERWISE - SEE SPECIFICATIONS.



OVERALL FLOOR PLAN - BUILDING ADDITION

SCALE: 1/32" = 1'-0"



McCall Smith Punshon, Inc.
 3700 Park 42 Drive Suite 190B
 Cincinnati, Ohio 45241-2097
 Tel: 513-759-0004 • Fax: 513-563-7099
 Engineers • Architects • Surveyors
 Planners • Landscape Architects

Drawn by DCC Project Mgr. RCM
 CAD File 973332-41
 X-Ref File

Issue/Revision	Revision Number	Date
FOR PERMIT		07/18/12
FOR CONSTRUCTION	1	08/22/12

© COPYRIGHT 2010, MCCALL SMITH PUNSHON, INC.

NEW WAREHOUSE EXPANSION
 FOR
Republic Wire
 UNION CENTRE DRIVE
 WEST CHESTER, OHIO 45069

Sheet Title
OVERALL FLOOR PLAN

Project No. 9733332
 Scale AS NOTED
 Sheet No. A11
 File No. 97333 32