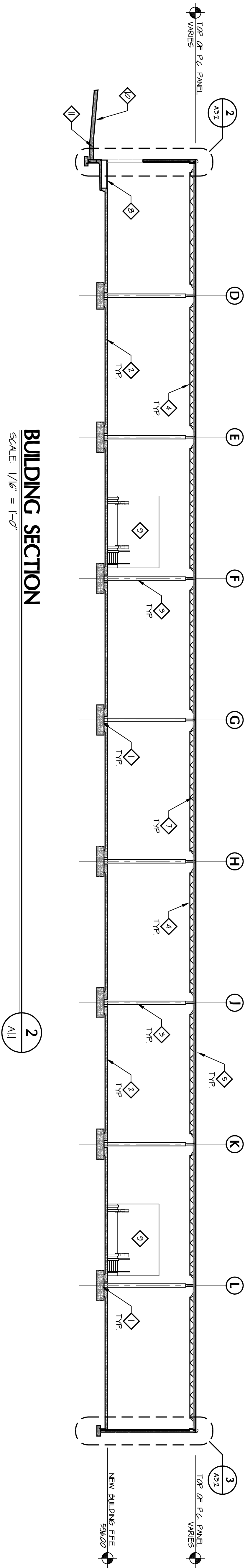


BUILDING SECTION
SCALE: 1/16" = 1'-0"

1
All



BUILDING SECTION
SCALE: 1/16" = 1'-0"

2
All

- DRAWING NOTES**
- 1 FOOTING AND BLOCK OUT BEYOND SHOWN FOR REFERENCE ONLY - SEE STRUCTURAL DRAWINGS
 - 2 8" REINFORCED CONCRETE SLAB ON GRADE OVER MINIMUM 6" COMPACTED GRANULAR FILL OVER COMPACTED EARTH - SEE STRUCTURAL DRAWINGS
 - 3 STEEL COLUMN BY PRE-ENGINEERED BUILDING MANUFACTURER
 - 4 BRG W/STS BY PRE-ENGINEERED BUILDING MANUFACTURER
 - 5 STANDING SEAM METAL ROOF BY PRE-ENGINEERED BUILDING MANUFACTURER
 - 6 STEEL PARTERS BY PRE-ENGINEERED BUILDING MANUFACTURER
 - 7 6" VINYL FACED DART INSULATION
 - 8 SEE FLOOR, WALL SECTIONS AND STRUCTURAL DRAWINGS FOR DOCK LEVELER INFORMATION
 - 9 FREEZEWAY CONNECTION TO EXISTING BUILDING BEYOND - SEE RENOVATION PLANS AND NEW WORK PLANS
 - 10 SEE CIVIL DRAWINGS AND STRUCTURAL DRAWINGS FOR HEAVY DUTY CONCRETE PAVING AT NEW DOCK AREA
 - 11 TRENCH DRAIN - SEE FLOORING DRAWINGS



McGill Smith Purston, Inc.
3700 Park 42 Drive Suite 1908
Cincinnati, Ohio 45241-2097
Tel 513-759-0004 • Fax 513-563-7099
Engineers • Architects • Surveyors
Planners • Landscape Architects

Drawn By DCC Project Mgr. RCM
CAD File 973332-41
X-Ref File

Issue/Revision Number	Revision Date
FOR PERMIT	07/18/12
ADDENDUM #1	07/27/12
FOR CONSTRUCTION	08/22/12

© COPYRIGHT 2010, MCGILL SMITH PURSTON, INC.

NEW WAREHOUSE EXPANSION
FOR
Republic Wire
UNION CENTRE DRIVE
WEST CHESTER, OHIO 45069

Sheet Title
BUILDING SECTIONS

Project No. 9733332
Scale AS NOTED
Sheet No. A3.1
File No. 97333 32